

MANOLI spray gun

W-71-P pressure feed type general purpose spray gun with conventional high atomization technology

Functions and features:

- The fluid nozzle and fluid needle which are made of heat-treated materials, are hard and anti-wear, and can lengthen their working life;
- The fluid nozzle can be taken apart and cleaned and the spray gun has an air nipple which makes air come in quickly;
- Fine and uniform atomization;
- Suitable for perfect finishes of products, such as furniture, household appliances, automobiles, pianos and plastic workpieces.



W-71-P

Technical parameters

Model	Type of feed	Fluid nozzle orifice Φmm	Spraying air pressure MPa (kgf/cm ²)	Air consumption l/min	Fluid output ml/min	Pattern width mm	Weight g
W-71-1G	Gravity	1.0	0.29 (3.0)	75	110	120	450
W-71-21G		1.3		195	160	165	
W-71-31G		1.5		230	190	185	
W-71-4G		1.8		230	220	220	
W-71-1S	Suction	1.0		75	95	100	
W-71-21S		1.3		195	140	155	
W-71-31S		1.5		230	170	170	
W-71-4S		1.8		230	195	195	
W-71-0	Pressure	0.8	0.34 (3.5)	240	200	190	
W-71-02		1.0		230	300	265	

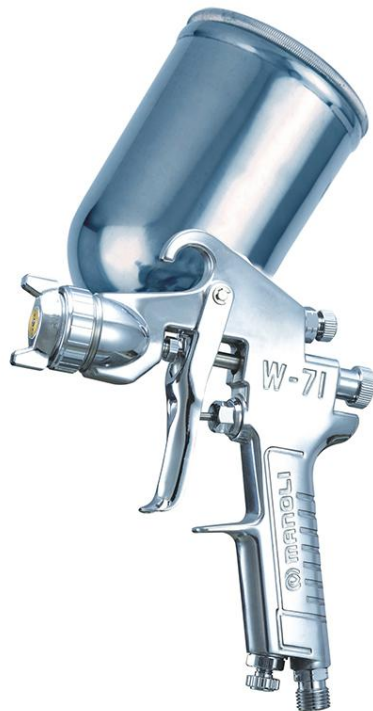
☆W-71 ●Spray distance: 200mm; ●Paint viscosity: 20±1 sec./NK-2; ●Paint pressure: 0.8kg/cm²; ●Fluid nipple: PF/NPF1/4;

●Air nipple: PF/NPF1/4

W-71-G gravity feed type general purpose spray gun with conventional high atomization technology

Functions and features:

- The fluid nozzle and fluid needle which are made of heat-treated materials, are hard and anti-wear, and can lengthen their working life;
- The fluid nozzle can be taken apart and cleaned and the spray gun has an air nipple which makes air come in quickly;
- Fine and uniform atomization;
- Suitable for perfect finishes of products, such as furniture, household appliances, automobiles, pianos and plastic workpieces.



W-71-G

Technical parameters

Model	Type of feed	Fluid nozzle orifice Φmm	Spraying air pressure MPa (kgf/cm ²)	Air consumption l/min	Fluid output ml/min	Pattern width mm	Weight g
W-71-1G	Gravity	1.0	0.29 (3.0)	75	110	120	450
W-71-21G		1.3		195	160	165	
W-71-31G		1.5		230	190	185	
W-71-4G		1.8		230	220	220	
W-71-1S	Suction	1.0		75	95	100	
W-71-21S		1.3		195	140	155	
W-71-31S		1.5		230	170	170	
W-71-4S		1.8		230	195	195	
W-71-0	Pressure	0.8	0.34 (3.5)	240	200	190	
W-71-02		1.0		230	300	265	

☆W-71 ●Spray distance: 200mm; ●Paint viscosity: 20±1 sec./NK-2; ●Paint pressure: 0.8kg/cm²; ●Fluid nipple: PF/NPF1/4;

●Air nipple: PF/NPF1/4

W-71-S suction feed type general purpose spray gun with conventional high atomization technology

Functions and features:

- The fluid nozzle and fluid needle which are made of heat-treated materials, are hard and anti-wear, and can lengthen their working life;
- The fluid nozzle can be taken apart and cleaned and the spray gun has an air nipple which makes air come in quickly;
- Fine and uniform atomization;
- Suitable for perfect finishes of products, such as furniture, household appliances, automobiles, pianos and plastic workpieces.



W-71-S

Technical parameters

Model	Type of feed	Fluid nozzle orifice Φmm	Spraying air pressure MPa (kgf/cm ²)	Air consumption l/min	Fluid output ml/min	Pattern width mm	Weight g
W-71-1G	Gravity	1.0	0.29 (3.0)	75	110	120	450
W-71-21G		1.3		195	160	165	
W-71-31G		1.5		230	190	185	
W-71-4G		1.8		230	220	220	
W-71-1S	Suction	1.0		75	95	100	
W-71-21S		1.3		195	140	155	
W-71-31S		1.5		230	170	170	
W-71-4S		1.8		230	195	195	
W-71-0	Pressure	0.8	0.34 (3.5)	240	200	190	
W-71-02		1.0		230	300	265	

☆W-71 ●Spray distance: 200mm; ●Paint viscosity: 20±1 sec./NK-2; ●Paint pressure: 0.8kg/cm²; ●Fluid nipple: PF/NPF1/4;

●Air nipple: PF/NPF1/4

W-77-P pressure feed medium type spray gun for medium-viscosity paints (primer) and adhesives

Functions and features:

- The fluid nozzle and fluid needle which are made of heat-treated materials, are hard and anti-wear, and can lengthen their working life;
- The fluid nozzle can be taken apart and cleaned and the spray gun has an air nipple which makes air come in quickly;
- Fine and uniform atomization;
- Most suitable for medium-viscosity or high-viscosity paints and large workpieces, such as furniture, household appliances, automobiles, pianos and plastic workpieces.



W-77-P

Technical parameters

Model	Type of feed	Fluid nozzle orifice Φ mm	Spraying air pressure MPa (kgf/cm ²)	Air consumption l/min	Fluid output ml/min	Pattern width mm	Weight g		
W-77-11G	Gravity	1.5	0.34 (3.5)	290	270	290	535		
W-77-21G		2.0		360	440	320			
W-77-31G		2.5		460	520	330			
W-77-4G		3.0		460	550	350			
W-77-1S	Suction	1.5		290	250	260			
W-77-21S		2.0		360	370	290			
W-77-31S		2.5		460	440	300			
W-77-4S		3.0		460	480	330			
W-77-02	Pressure	1.2			430	480		380	

☆W-77 •Spray distance: 250mm; •Paint viscosity: 20±1 sec./NK-2; •Paint pressure: 0.8kg/cm²; •Fluid nipple: PF/NPF3/8;

•Air nipple: PF/NPF1/4

W-77-G gravity feed medium type spray gun for medium-viscosity paints (primer) and adhesives

Functions and features:

- The fluid nozzle and fluid needle which are made of heat-treated materials, are hard and anti-wear, and can lengthen their working life;
- The fluid nozzle can be taken apart and cleaned and the spray gun has an air nipple which makes air come in quickly;
- Fine and uniform atomization;
- Most suitable for medium-viscosity or high-viscosity paints and large workpieces, such as furniture, household appliances, automobiles, pianos and plastic workpieces.



W-77-G

Technical parameters

Model	Type of feed	Fluid nozzle orifice Φ mm	Spraying air pressure MPa (kgf/cm ²)	Air consumption l/min	Fluid output ml/min	Pattern width mm	Weight g		
W-77-11G	Gravity	1.5	0.34 (3.5)	290	270	290	535		
W-77-21G		2.0		360	440	320			
W-77-31G		2.5		460	520	330			
W-77-4G		3.0		460	550	350			
W-77-1S	Suction	1.5		290	250	260			
W-77-21S		2.0		360	370	290			
W-77-31S		2.5		460	440	300			
W-77-4S		3.0		460	480	330			
W-77-02	Pressure	1.2			430	480		380	

☆W-77 ●Spray distance: 250mm; ●Paint viscosity: 20±1 sec./NK-2; ●Paint pressure: 0.8kg/cm²; ●Fluid nipple: PF/NPF3/8;

●Air nipple: PF/NPF1/4

W-77-S suction feed medium type spray gun for medium-viscosity paints (primer) and adhesives

Functions and features:

- The fluid nozzle and fluid needle which are made of heat-treated materials, are hard and anti-wear, and can lengthen their working life;
- The fluid nozzle can be taken apart and cleaned and the spray gun has an air nipple which makes air come in quickly;
- Fine and uniform atomization;
- Most suitable for medium-viscosity or high-viscosity paints and large workpieces, such as furniture, household appliances, automobiles, pianos and plastic workpieces.



W-77-S

Technical parameters

Model	Type of feed	Fluid nozzle orifice Φ mm	Spraying air pressure MPa (kgf/cm ²)	Air consumption l/min	Fluid output ml/min	Pattern width mm	Weight g		
W-77-11G	Gravity	1.5	0.34 (3.5)	290	270	290	535		
W-77-21G		2.0		360	440	320			
W-77-31G		2.5		460	520	330			
W-77-4G		3.0		460	550	350			
W-77-1S	Suction	1.5		290	250	260			
W-77-21S		2.0		360	370	290			
W-77-31S		2.5		460	440	300			
W-77-4S		3.0		460	480	330			
W-77-02	Pressure	1.2			430	480		380	

☆W-77 ●Spray distance: 250mm; ●Paint viscosity: 20±1 sec./NK-2; ●Paint pressure: 0.8kg/cm²; ●Fluid nipple: PF/NPF3/8;

●Air nipple: PF/NPF1/4

W-101-P lightweight pressure feed type spray gun with a perfect atomization effect

Functions and features:

- A reduction of paints adhering to the inside of the air cap makes atomization more uniform and achieves a steady spray pattern;
- Reduce both overspray and the triggering load, and achieve a better atomization effect by reducing the spraying air pressure (at the gun handle) by 0.05MPa;
- All fluid passages are made of stainless steel and the fluid nozzle and fluid needle are made of first-class stainless steel, so the spray gun is suitable for waterborne paints;
- Suitable for a variety of fluids including oil paints, epoxy resins, glues and working oils, and most suitable for car repairs, woodwork, furniture and metal.



W-101-P

Technical parameters

Model	Type of feed	Fluid nozzle orifice Φmm	Spraying air pressure MPa (kgf/cm ²)	Air consumption l/min	Fluid output ml/min	Pattern width mm	High atomization	General atomization	Applied air cap model	Required air compressor kw	Weight g		
W-101-082P	Pressure	0.8	0.29 (3.0)	270	150	190	•		E2P	1.5	315		
W-101-102P		1.0			200	220							
W-101-132P		1.3		220	200	210							
W-101-152P		1.5			250	240							
W-101-101S	Suction	1.0	0.24 (2.5)	75	85	120		•	E1	0.4 - 0.75			
W-101-101G	Gravity				95	130							
W-101-131S	Suction	1.3		145	150	155		•	K1				
W-101-131G	Gravity				160	170							
W-101-132S	Suction			225	150	160	•		H2				
W-101-132G	Gravity				160	175							
W-101-134S	Suction	0.20 (2.0)		210	140※	180※						H4	0.75 - 1.5
W-101-134G	Gravity				155※	205※							
W-101-151S	Suction	1.5		0.24 (2.5)	145	175	170		•	K1	1.5		
W-101-151G	Gravity					200	180						
W-101-152S	Suction				225	170	175	•		H2			
W-101-152G	Gravity					190	190						
W-101-181S	Suction	1.8	170		210	170		•	N1				
W-101-181G	Gravity				240	190							

W-101-G lightweight gravity feed type spray gun with a perfect atomization effect

Functions and features:

- A reduction of paints adhering to the inside of the air cap makes atomization more uniform and achieves a steady spray pattern;
- Reduce both overspray and the triggering load, and achieve a better atomization effect by reducing the spraying air pressure (at the gun handle) by 0.05MPa;
- All fluid passages are made of stainless steel and the fluid nozzle and fluid needle are made of first-class stainless steel, so the spray gun is suitable for waterborne paints;
- Suitable for a variety of fluids including oil paints, epoxy resins, glues and working oils, and most suitable for car repairs, woodwork, furniture and metal.



W-101-G

Technical parameters

Model	Type of feed	Fluid nozzle orifice Φmm	Spraying air pressure MPa (kgf/cm ²)	Air consumption l/min	Fluid output ml/min	Pattern width mm	High atomization	General atomization	Applied air cap model	Required air compressor kw	Weight g		
W-101-082P	Pressure	0.8	0.29 (3.0)	270	150	190	•		E2P	1.5	315		
W-101-102P		1.0			200	220							
W-101-132P		1.3		220	200	210							
W-101-152P		1.5			250	240							
W-101-101S	Suction	1.0	0.24 (2.5)	75	85	120		•	E1	0.4 - 0.75			
W-101-101G	Gravity				95	130							
W-101-131S	Suction	1.3		145	150	155		•	K1				
W-101-131G	Gravity				160	170							
W-101-132S	Suction			225	150	160	•		H2				
W-101-132G	Gravity				160	175							
W-101-134S	Suction	0.20 (2.0)		210	140※	180※						H4	0.75 - 1.5
W-101-134G	Gravity				155※	205※							
W-101-151S	Suction	1.5		0.24 (2.5)	145	175	170		•	K1	1.5		
W-101-151G	Gravity					200	180						
W-101-152S	Suction				225	170	175	•		H2			
W-101-152G	Gravity					190	190						
W-101-181S	Suction	1.8	170		210	170		•	N1				
W-101-181G	Gravity				240	190							

W-101-S lightweight suction feed type spray gun with a perfect atomization effect

Functions and features:

- A reduction of paints adhering to the inside of the air cap makes atomization more uniform and achieves a steady spray pattern;
- Reduce both overspray and the triggering load, and achieve a better atomization effect by reducing the spraying air pressure (at the gun handle) by 0.05MPa;
- All fluid passages are made of stainless steel and the fluid nozzle and fluid needle are made of first-class stainless steel, so the spray gun is suitable for waterborne paints;
- Suitable for a variety of fluids including oil paints, epoxy resins, glues and working oils, and most suitable for car repairs, woodwork, furniture and metal.



W-101-S

Technical parameters

Model	Type of feed	Fluid nozzle orifice Φmm	Spraying air pressure MPa (kgf/cm ²)	Air consumption l/min	Fluid output ml/min	Pattern width mm	High atomization	General atomization	Applied air cap model	Required air compressor kw	Weight g	
W-101-082P	Pressure	0.8	0.29 (3.0)	270	150	190	•		E2P	1.5	315	
W-101-102P		1.0			200	220						
W-101-132P		1.3		220	200	210						
W-101-152P		1.5			250	240						
W-101-101S	Suction	1.0	0.24	75	85	120		•	E1	0.4 - 0.75		
W-101-101G	Gravity				95	130						
W-101-131S	Suction	1.3	(2.5)	145	150	155		•	K1			
W-101-131G	Gravity				160	170						
W-101-132S	Suction			225	150	160			•			H2
W-101-132G	Gravity				160	175						
W-101-134S	Suction	0.20 (2.0)	210	210	140※	180※		H4				0.75 - 1.5
W-101-134G	Gravity				155※	205※						
W-101-151S	Suction	1.5	0.24 (2.5)	145	175	170		•	K1			
W-101-151G	Gravity				200	180						
W-101-152S	Suction			225	170	175			•		H2	
W-101-152G	Gravity				190	190						
W-101-181S	Suction	1.8	170	170	210	170		•			N1	1.5
W-101-181G	Gravity				240	190						

LPH-101 lightweight low-pressure environmental-protection spray gun

Functions and features:

- Reduce touch-ups and refinishing due to low pressure and low air volume;
- The air pressure in the air cap is less than 0.7bar, resulting in less overspray and high transfer efficiency, so that paint consumption is reduced by from 20% to 30%;
- A large pattern width and an optimum atomization effect;
- A lightweight gun body coupled with a smaller triggering load;
- Suitable for metal powders, which can be applied uniformly by the spray gun and won't be deposited;
- Suitable for a variety of fluids including oil paints, epoxy resins, glues and working oils, and most suitable for car repairs, woodwork, furniture and metal.



LPH-101-S

Technical parameters

Model	Type of feed	Fluid nozzle orifice Φ mm	Applied air cap model	Spraying air pressure MPa (kgf/cm ²)	Air consumption l/min	Fluid output ml/min	Pattern width mm	Weight g
LPH-101-08P	Pressure	0.8	E1	0.26 (2.7)	430	140	200	385
LPH-101-10P		1.0			430	150		
LPH-101-12P		1.2	G2		530	300		

☆LPH-101 •Spray distance: 200mm; •Paint viscosity: 20±1 sec./NK-2; •Paint pressure: 0.8kg/cm²; •Fluid nipple: PF/NPF1/4;
•Air nipple: PF/NPF1/4

W-101R round pattern spray gun

Functions and features:

- A reduction of paints adhering to the inside of the air cap makes atomization more uniform and achieves a steady spray pattern;
- Reduce both overspray and the triggering load, and achieve a better atomization effect by reducing the spraying air pressure (at the gun handle) by 0.05MPa;
- All fluid passages are made of stainless steel and the fluid nozzle and fluid needle are made of first-class stainless steel, so the spray gun is suitable for waterborne paints;
- Suitable for a variety of fluids including oil paints, epoxy resins, glues and working oils, and most suitable for car repairs, woodwork, furniture and metal.



W-101R

Technical parameters

Model	Type of feed	Fluid nozzle orifice Φ mm	Applied air cap model	Spraying air pressure MPa (kgf/cm ²)	Air consumption l/min	Fluid output ml/min	Pattern width mm	Weight g
W-101-05R	General type	0.5	05R	0.29 (3.0)	270	120	40	320
W-101-08R		0.8	08R			150	60	
W-101-10R		1.0				200	75	
W-101-13R		1.3		0.24 (2.5)	220	200	90	
W-101-15R		1.5	250			105		
W-101-18R		1.8	18R			150	240	

☆W-101R ●Spray distance: 200mm; ●Paint viscosity: 20±1 sec./NK-2; ●Paint pressure: 0.8kg/cm²; ●Fluid nipple: PF/NPF1/4;

●Air nipple: PF/NPF1/4

MAL-H1-P low pressure lightweight pressure feed type spray gun with a perfect atomization effect

Functions and features:

- Reduce touch-ups and refinishing due to low pressure and low air volume;
- With a reduction of spraying air pressure, reduce overspray and save approximately 10% paints;
- A large pattern width;
- A lightweight gun body coupled with a smaller triggering load;
- Widely used in a variety of products and industries.



Technical parameters

Model	Type of feed	Fluid nozzle orifice Ømm	Spraying air pressure MPa (kgf/cm ²)	Air consumption l/min	Fluid output ml/min	Pattern width mm	Required air compressor kw	Weight g
MAL-H1-082P	Pressure	0.8	0.24 (2.4)	150	150	190	1.5	330
MAL-H1-102P		1.0			170	220		
MAL-H1-132P		1.3		200		230		
MAL-H1-152P		1.5			200	240		
MAL-H1-182P		1.8			200	240		
MAL-H1-102G	Gravity	1.0	0.2 (2.0)	225	170	200		
MAL-H1-132G		1.3			200	240		
MAL-H1-152G		1.5				170		
MAL-H1-182G		1.8			200		240	
MAL-H1-102S	Suction	1.0			0.2 (2.0)	225	170	200
MAL-H1-132S		1.3					200	240
MAL-H1-152S		1.5						170
MAL-H1-182S		1.8					200	

☆MAL-H1 ●Spray distance: 200mm; ●Paint viscosity: 20±1 sec./NK-2; ●Paint pressure: 0.8kg/cm²; ●Fluid nipple: PF/NPF1/4;

●Air nipple: PF/NPF1/4

MAL-H1-G low pressure lightweight gravity feed type spray gun with a perfect atomization effect

Functions and features:

- Reduce touch-ups and refinishing due to low pressure and low air volume;
- With a reduction of spraying air pressure, reduce overspray and save approximately 10% paints;
- A large pattern width;
- A lightweight gun body coupled with a smaller triggering load;
- Widely used in a variety of products and industries.



Technical parameters

Model	Type of feed	Fluid nozzle orifice Ømm	Spraying air pressure MPa (kgf/cm ²)	Air consumption l/min	Fluid output ml/min	Pattern width mm	Required air compressor kw	Weight g
MAL-H1-082P	Pressure	0.8	0.24 (2.4)	150	150	190	1.5	330
MAL-H1-102P		1.0			170	220		
MAL-H1-132P		1.3		200		230		
MAL-H1-152P		1.5			200	240		
MAL-H1-182P		1.8			200	240		
MAL-H1-102G	Gravity	1.0	0.2 (2.0)	225	170	200		
MAL-H1-132G		1.3			200	240		
MAL-H1-152G		1.5				170		
MAL-H1-182G		1.8			200		240	
MAL-H1-102S	Suction	1.0			0.2 (2.0)	225	170	200
MAL-H1-132S		1.3					200	240
MAL-H1-152S		1.5						170
MAL-H1-182S		1.8					200	

☆MAL-H1 ●Spray distance: 200mm; ●Paint viscosity: 20±1 sec./NK-2; ●Paint pressure: 0.8kg/cm²; ●Fluid nipple: PF/NPF1/4;

●Air nipple: PF/NPF1/4

MAL-H1-S low pressure lightweight suction feed type spray gun with a perfect atomization effect

Functions and features:

- Reduce touch-ups and refinishing due to low pressure and low air volume;
- With a reduction of spraying air pressure, reduce overspray and save approximately 10% paints;
- A large pattern width;
- A lightweight gun body coupled with a smaller triggering load;
- Widely used in a variety of products and industries.



Technical parameters

Model	Type of feed	Fluid nozzle orifice Φ mm	Spraying air pressure MPa (kgf/cm ²)	Air consumption l/min	Fluid output ml/min	Pattern width mm	Required air compressor kw	Weight g
MAL-H1-082P	Pressure	0.8	0.24 (2.4)	150	150	190	1.5	330
MAL-H1-102P		1.0			170	220		
MAL-H1-132P		1.3		200		230		
MAL-H1-152P		1.5			200	240		
MAL-H1-182P		1.8			200	240		
MAL-H1-102G	Gravity	1.0	0.2 (2.0)	225	170	200		
MAL-H1-132G		1.3			200	240		
MAL-H1-152G		1.5				170		
MAL-H1-182G		1.8			200		240	
MAL-H1-102S	Suction	1.0			0.2 (2.0)	225	170	200
MAL-H1-132S		1.3					200	240
MAL-H1-152S		1.5						170
MAL-H1-182S		1.8					200	

☆MAL-H1 ●Spray distance: 200mm; ●Paint viscosity: 20±1 sec./NK-2; ●Paint pressure: 0.8kg/cm²; ●Fluid nipple: PF/NPF1/4;

●Air nipple: PF/NPF1/4

RG-3L spray gun for round patterns

Functions and features:

- The fluid nozzle and fluid needle are made of stainless steel SUS303, which are suitable for waterborne paints;
- Convenient operation and low paint consumption;
- Several optional orifices of fluid nozzles;
- Suitable for plastic molds (toys), textile patterns, arts and crafts, amateur woodwork, car repairs, leather repairs, and car repairs for small scratches.



RG-3L

Technical parameters

Model	Fluid nozzle orifice Φ mm	Spray distance mm	Spraying air pressure MPa (kgf/cm ²)	Air consumption l/min	Fluid output ml/min	Pattern width mm	Required air compressor kw	Standard plastic container	Weight g
RG-3L-1	0.4	200	0.24 (2.4)	30	8	25	0.2 - 0.75	Gravity feed	195
RG-3L-2	0.6			30	25	35		alloy	
RG-3L-3	1.0			50	55			pc-5 (200ml)	

WL-50 small type low pressure spray gun

Functions and features:

- The fluid nozzle and fluid needle are made of stainless steel SUS303 for waterborne paints;
- Reduce overspray of touch-ups and refinishing due to low pressure and low air volume;
- Little overspray and bounceback contribute to health protection of painters;
- Suitable for textile patterns, arts and crafts, amateur woodwork, car repairs, leather repairs, and car repairs for small scratches.



WL-50

Technical parameters

Model	Fluid nozzle orifice Φmm	Spraying air pressure MPa (kgf/cm ²)	Air consumption l/min	Fluid output ml/min	Pattern width mm	Required air compressor kw	Weight g
WL-50-042G	0.4	0.09 (0.9)	50	8※	40※	0.2 - 0.75	220
WL-50-062G	0.6			25※	60※		
WL-50-102G	1.0			55※	100※		

MINI-06 ultra small type spray gun for mold release agents

Functions and features:

- Small, lightweight, unblocked, convenient to operate, easy to maintain and long-life;
- Suitable for waterborne or oily mold release agents, water transfer printing activators, an ultra small amount of oil mists for punch plates, and silver mirror paints;
- Suitable for painting operations with high atomization and low air volume for low-viscosity paints.



Technical parameters

Model	Fluid nozzle orifice Φ mm	Spraying air pressure MPa (kgf/cm ²)	Air consumption l/min	Fluid output ml/min	Pattern width mm	Weight g
MINI-06-03P	0.3	0.1 (1.0)	50	130	120	227
MINI-06-05P	0.5			180	150	
MINI-06-08P	0.8			250	180	
MINI-08-03P	0.3	0.1 (1.0)	50	130	120	300
MINI-08-05P	0.5			180	150	
MINI-08-08P	0.8			250	180	

MINI-08 ultra small type spray gun for mold release agents

Functions and features:

- Small, lightweight, unblocked, convenient to operate, easy to maintain and long-life;
- Suitable for waterborne or oily mold release agents, water transfer printing activators, an ultra small amount of oil mists for punch plates, and silver mirror paints;
- Suitable for painting operations with high atomization and low air volume for low-viscosity paints.



MINI-08

Technical parameters

Model	Fluid nozzle orifice Φ mm	Spraying air pressure MPa (kgf/cm ²)	Air consumption l/min	Fluid output ml/min	Pattern width mm	Weight g
MINI-06-03P	0.3	0.1 (1.0)	50	130	120	227
MINI-06-05P	0.5			180	150	
MINI-06-08P	0.8			250	180	
MINI-08-03P	0.3			130	120	300
MINI-08-05P	0.5			180	150	
MINI-08-08P	0.8			250	180	

MINI-S60 low pressure stainless steel anti-corrosive spray gun for chemical liquids and fusion agents

Functions and features:

- Small, lightweight, low-pressure, unblocked, convenient to operate, easy to maintain and long-life;
- All parts are made of anti-corrosive stainless steel for solvent resistant agents, fusion agents and medical liquids.



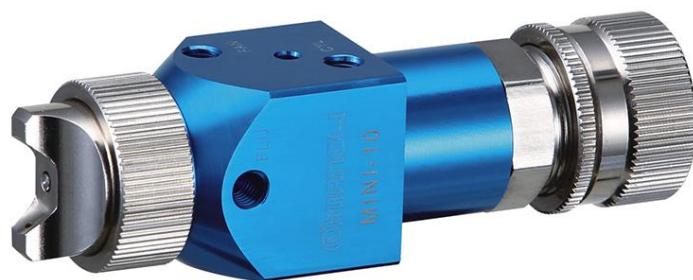
Technical parameters

Model	Fluid nozzle orifice Φ mm	Spraying air pressure MPa (kgf/cm ²)	Air consumption l/min	Fluid output ml/min	Pattern width mm	Weight g
MINI-S60-03P	0.3	0.1 (1.0)	50	130	120	200
MINI-S60-05P	0.5			180	150	
MINI-S60-10P	1.0			250	180	

MINI-10 ultra small type automatic spray gun

Functions and features:

- Small, lightweight, unblocked, convenient to operate, easy to maintain and long-life;
- Suitable for waterborne or oily mold release agents, water transfer printing activators, anti-fingerprint oil, an ultra small amount of oil mists for punch plates, and silver mirror paints;
- Suitable for painting operations with high atomization and low air volume for low-viscosity paints.



MINI-10

Technical parameters

Model	Fluid nozzle orifice Φ mm	Spraying air pressure MPa (kgf/cm ²)	Air consumption l/min	Fluid output ml/min	Pattern width mm	Weight g
MINI-10-03P	0.3	0.1 (1.0)	50	130	120	142
MINI-10-05P	0.5			180	150	
MINI-10-10P	1.0			250	180	
MINI-20-03P	0.3			130	120	135
MINI-20-05P	0.5			180	150	
MINI-20-10P	1.0			250	180	

MINI-20 ultra small type automatic spray gun

Functions and features:

- Small, lightweight, unblocked, convenient to operate, easy to maintain and long-life;
- Suitable for waterborne or oily mold release agents, water transfer printing activators, anti-fingerprint oil, an ultra small amount of oil mists for punch plates, and silver mirror paints;
- Suitable for painting operations with high atomization and low air volume for low-viscosity paints.



MAL-MINI-20

Technical parameters

Model	Fluid nozzle orifice Φmm	Spraying air pressure MPa (kgf/cm ²)	Air consumption l/min	Fluid output ml/min	Pattern width mm	Weight g
MINI-10-03P	0.3	0.1 (1.0)	50	130	120	142
MINI-10-05P	0.5			180	150	
MINI-10-10P	1.0			250	180	
MINI-20-03P	0.3			130	120	135
MINI-20-05P	0.5			180	150	
MINI-20-10P	1.0			250	180	

MINI-S30 ultra small type automatic spray gun

Functions and features:

- Small, lightweight, unblocked, convenient to operate, easy to maintain and long-life;
- Suitable for an ultra small amount of waterborne or oily paints and painting operation for small workpieces, for example, small toys;
- Suitable for painting operation with high atomization and low air volume for low-viscosity paints.



Technical parameters

Model	Fluid nozzle orifice Φ mm	Spraying air pressure MPa (kgf/cm ²)	Air consumption l/min	Fluid output ml/min	Pattern width mm	Weight g
MINI-50-04P	0.4	0.1 (1.0)	50	130	100	140
MINI-50-06P	0.6			160	110	
MINI-50-10P	1.0			230	120	
MINI-S30-03P	0.3		30	8	80	70

MINI-50 ultra small type automatic spray gun

Functions and features:

- Small, lightweight, unblocked, convenient to operate, easy to maintain and long-life;
- Suitable for an ultra small amount of waterborne or oily paints and painting operation for small workpieces, for example, small toys;
- Suitable for painting operation with high atomization and low air volume for low-viscosity paints.



MAL-MINI-50

Technical parameters

Model	Fluid nozzle orifice Φ mm	Spraying air pressure MPa (kgf/cm ²)	Air consumption l/min	Fluid output ml/min	Pattern width mm	Weight g
MINI-50-04P	0.4	0.1 (1.0)	50	130	100	140
MINI-50-06P	0.6			160	110	
MINI-50-10P	1.0			230	120	
MINI-S30-03P	0.3		30	8	80	70

WA-101 small type automatic spray gun

Functions and features:

- High transfer efficiency and less overspray, resulting in a reduction of the cost of paints;
- Optimal atomization effect and finely atomized paint particles on the surface of workpieces;
- Convenient to operate and easy to maintain;
- The spray gun is properly used in a painting line for mass production, used with automatic painting equipment, reciprocators and painting robots;
- Suitable for all kinds of paints, medical coating and glass.



WA-101

Technical parameters

Model	Name	Type of feed	Fluid nozzle orifice Φmm	Spray distance mm	Spraying air pressure MPa (kgf/cm ²)	Air consumption l/min	Fluid output ml/min	Pattern width mm	Applied air cap model	Required air compressor kw	Weight g	Application	
WA-101-082P(V)	Small type automatic spray gun	Pressure	0.8	200	0.29 (2.9)	270	150	190	E2P	1.5 -	440	Small workpieces	
WA-101-101P(V)			1.0			90	100	140	E1	0.75 -			
WA-101-102P(V)			1.0			270	200	220	E2P	1.5 -			
WA-101-132P			1.3			260	250	230	H2				
WA-101-152P			1.5			260	270	245	N2				
WA-101-182P			1.8			190	310	240					
WA-200-122P(V)	Large type automatic spray gun	Pressure	1.2	250		0.55 (5.5)	530	500	400	G2P	2.2 -	470	Large workpieces
WA-200-152P			1.5				330	270	340	K2			
WA-200-202P			2.0				360	400	320	R2			
WA-200-251P			2.5				360	500	330	W1			
WA-200-301P			3.0				550	650	370	G2			

WA-200 large type automatic spray gun

Functions and features:

- High transfer efficiency and less overspray, resulting in a reduction of the cost of paints;
- Optimal atomization effect and finely atomized paint particles on the surface of workpieces;
- Convenient to operate and easy to maintain;
- The spray gun is properly used in a painting line for mass production, used with automatic painting equipment, reciprocators and painting robots;
- Suitable for all kinds of paints, medical coating and glass.



WA-200

Technical parameters

Model	Name	Type of feed	Fluid nozzle orifice Φmm	Spray distance mm	Spraying air pressure MPa (kgf/cm ²)	Air consumption l/min	Fluid output ml/min	Pattern width mm	Applied air cap model	Required air compressor kw	Weight g	Application	
WA-101-082P(V)	Small type automatic spray gun	Pressure	0.8	200	0.29 (2.9)	270	150	190	E2P	1.5 -	440	Small workpieces	
WA-101-101P(V)			1.0			90	100	140	E1	0.75 -			
WA-101-102P(V)			1.0			270	200	220	E2P	1.5 -			
WA-101-132P			1.3			260	250	230	H2				
WA-101-152P			1.5			260	270	245					
WA-101-182P			1.8			190	310	240	N2				
WA-200-122P(V)	Large type automatic spray gun	Pressure	1.2	250		0.55 (5.5)	530	500	400	G2P	2.2 -	470	Large workpieces
WA-200-152P			1.5				330	270	340	K2			
WA-200-202P			2.0				360	400	320	R2			
WA-200-251P			2.5				360	500	330	W1			
WA-200-301P			3.0				550	650	370	G2			

WA-101R round pattern automatic spray gun

Functions and features:

- High transfer efficiency and less overspray, resulting in a reduction of the cost of paints;
- Optimal atomization effect and finely atomized paint particles on the surface of workpieces;
- Convenient to operate and easy to maintain;
- The spray gun is properly used in a painting line for mass production, used with automatic painting equipment, reciprocators and painting robots;
- Suitable for all kinds of paints, medical coating and glass.



WA-101R

Technical parameters

Model	Name	Type of feed	Fluid nozzle orifice Φ mm	Spray distance mm	Spraying air pressure MPa (kgf/cm ²)	Air consumption l/min	Fluid output ml/min	Pattern width mm	Required air compressor kw	Weight g	Application
WA-101R-05P(V)	Round pattern automatic spray gun	Pressure	0.5	200	0.29 (3.0)	40	60	50	0.2 - 0.4	440	Small workpieces and points
WA-101R-10P(V)			1.0			50	250	70			
WA-101R-13P(V)			1.3			55	360	80			

LPA-101 small type low pressure automatic spray gun

Functions and features:

- The speed of air flow ejected from the low pressure spray gun is slower than that of a conventional spray gun, so there is less bounceback;
- With low spraying air pressure and less bounceback, paint particles easily reach the workpieces;
- The fluid nozzle and fluid needle are made of stainless steel for waterborne paints;
- Used with automatic painting equipment, reciprocators and painting robots for mass production;
- LPA-101 is a small type low pressure automatic spray gun, which is suitable for small workpieces;
- Suitable for hardware, toys, automobiles, furniture, woodwork, industrial products and plastic products.



LPA-101

Technical parameters

Model	Name	Type of feed	Fluid nozzle orifice Φ mm	Spray distance mm	Spraying air pressure MPa (kgf/cm ²)	Air consumption l/min	Fluid output ml/min	Pattern width mm	Applied air cap model	Required air compressor kw	Weight g	Application
LPA-101-101P(V)	Small type low pressure automatic spray gun	Pressure	1.0	200	0.26 (2.6)	430	150	200	E1	2.2 - 3.7	460	Small workpieces
LPA-200-122P(V)	Large type low pressure automatic spray gun		1.2		0.20 (2.0)	500	500	300	G2		500	Large workpieces

LPA-200 large type low pressure automatic spray gun

Functions and features:

- The speed of air flow ejected from the low pressure spray gun is slower than that of a conventional spray gun, so there is less bounceback;
- With low spraying air pressure and less bounceback, paint particles easily reach the workpieces;
- The fluid nozzle and fluid needle are made of stainless steel for waterborne paints;
- Used with automatic painting equipment, reciprocators and painting robots for mass production;
- LPA-200 is a large type low pressure automatic spray gun, which is suitable for large workpieces;
- Suitable for hardware, toys, automobiles, furniture, woodwork, industrial products and plastic products.



LPA-200

Technical parameters

Model	Name	Type of feed	Fluid nozzle orifice Φ mm	Spray distance mm	Spraying air pressure MPa (kgf/cm ²)	Air consumption l/min	Fluid output ml/min	Pattern width mm	Applied air cap model	Required air compressor kw	Weight g	Application
LPA-101-101P(V)	Small type low pressure automatic spray gun	Pressure	1.0	200	0.26 (2.6)	430	150	200	E1	2.2 - 3.7	460	Small workpieces
LPA-200-122P(V)	Large type low pressure automatic spray gun		1.2		0.20 (2.0)	500	500	300	G2		500	Large workpieces

WA-101-ZP small type automatic spray gun for ceramics

Functions and features:

- The tips of the fluid needle and fluid nozzle are hardened and their hardness is nearly that of tungsten steel, so they are anti-wear;
- Suitable for enamel glaze, ceramic glaze, abrasives and similarly abrasive fluids.



Technical parameters

Model	Type of feed	Fluid nozzle orifice Φ mm	Spray distance mm	Spraying air pressure MPa (kgf/cm ²)	Air consumption l/min	Fluid output ml/min	Pattern width mm	Applied air cap model	Required air compressor kw	Weight g
WA-101-132ZP	Pressure	1.3	200	0.3 (3.0)	260	250	245	H2	1.5	440
WA-101-152ZP		1.5				270	245			
WA-200-202ZP		2.0	250	0.35 (3.5)		400	330	R2	2.2	470
WA-200-251ZP		2.5			500	350	W1			
WA-200-301ZP		3.0			500	650	370	G2		

WA-200-ZP large type automatic spray gun for ceramics

Functions and features:

- The tips of the fluid needle and fluid nozzle are hardened and their hardness is nearly that of tungsten steel, so they are anti-wear;
- Suitable for enamel glaze, ceramic glaze, abrasives and similarly abrasive fluids.



Technical parameters

Model	Type of feed	Fluid nozzle orifice Φ mm	Spray distance mm	Spraying air pressure MPa (kgf/cm ²)	Air consumption l/min	Fluid output ml/min	Pattern width mm	Applied air cap model	Required air compressor kw	Weight g
WA-101-132ZP	Pressure	1.3	200	0.3 (3.0)	260	250	245	H2	1.5	440
WA-101-152ZP		1.5				270	245			
WA-200-202ZP		2.0	250	0.35 (3.5)		400	330	R2		
WA-200-251ZP		2.5		0.55 (5.5)	500	350	W1	2.2	470	
WA-200-301ZP		3.0			500	650	370			G2

MAL-A1 small type automatic spray gun

Functions and features:

- Compared with a conventional spray gun, paint and air consumption are reduced by from 10% to 15%;
- Save charges of cleaning the spray booth due to high transfer efficiency;
- Fluid passages are made of stainless steel for most of paints and waterborne paints;
- The fluid needle and fluid nozzle are made of stainless steel 316, so the spray gun can also apply corrosive paints for porcelains and ceramic glazes;
- It is the first choice for leather painting and film coating. It is suitable for automobiles, plastic workpieces, woodwork, housings and buttons of mobile phones, laptops and so on.



MAL-A1

Technical parameters

Model	Type of feed	Fluid nozzle orifice Φ mm	Air consumption l/min	Fluid output ml/min	Pattern width mm	Weight g
MAL-A1-102P	Pressure	1.0	190	100	250	445
MAL-A1-132P		1.3	200	250	300	
MAL-A1-152P		1.5	200	300	300	
MAL-A2-122P	Pressure	1.2	300	400	320	500
MAL-A2-152P		1.5	330	400	350	
MAL-A2-202P		2.0	360	450	400	
MAL-A2-252P		2.5	400	450	450	

MAL-A2 large type automatic spray gun

Functions and features:

- Compared with a conventional spray gun, paint and air consumption are reduced by from 10% to 15%;
- Save charges of cleaning the spray booth due to high transfer efficiency;
- Fluid passages are made of stainless steel for most of paints and waterborne paints;
- The fluid needle and fluid nozzle are made of stainless steel 316, so the spray gun can also apply corrosive paints for porcelains and ceramic glazes;
- It is the first choice for leather painting and film coating. It is suitable for automobiles, plastic workpieces, woodwork, housings and buttons of mobile phones, laptops and so on.



Technical parameters

Model	Type of feed	Fluid nozzle orifice Φ mm	Air consumption l/min	Fluid output ml/min	Pattern width mm	Weight g
MAL-A1-102P	Pressure	1.0	190	100	250	445
MAL-A1-132P		1.3	200	250	300	
MAL-A1-152P		1.5	200	300	300	
MAL-A2-122P		1.2	300	400	320	500
MAL-A2-152P		1.5	330	400	350	
MAL-A2-202P		2.0	360	450	400	
MAL-A2-252P		2.5	400	450	450	

SGD-71 disheveled spray gun

Functions and features:

- SGD-71 can be used in decorations of surfaces of products, spraying disheveled patterns, big points and small points;
- For small point patterns, please use No. 1 air cap;
- For big point patterns, please use No. 2 air cap. Paint viscosity is 25 seconds below and air pressure is 0.15 (1.5) MPa (bar) above;
- For disheveled patterns, please use No. 3 air cap. Paint viscosity is 35 seconds above and air pressure is 0.15 (1.5) MPa (bar) below.



SGD-71

Technical parameters

Model	Type of feed	Fluid nozzle orifice Φ mm	Spraying air pressure MPa (kgf/cm ²)	Air consumption l/min	Fluid output ml/min	Weight g
SGD-71	Suction	0.7	0.1-0.25 (1.0-2.5)	80	80	1012
		2.0		140	240	
SGD-WA101	Pressure	0.8		80	80	522

WRA-101 automatic spray gun used with robots

Functions and features:

- A long and narrow spray pattern, uniform and optimum atomization, a large pattern width and finely atomized paint particles;
- High-efficiency and fast application;
- Easy operation and a lightweight gun body;
- Easy to clean the fluid nozzle because of the fluid circulation hole set in the spray gun;
- As required, inlet pressure is adjustable from 2.5bar to 3.0bar to reduce bounceback and save paints;
- Used with mechanical arms or automatic painting equipment for mass production. The parameters of inlet pressure and pattern width can be set outside, so that it can be remotely adjusted and controlled independently to reduce operational problems;
- Widely used in all kinds of industries, such as computer housing, mobile phone housing, cosmetics, furniture, hand tools, medicine, food, textile, glass, plastics, rubber, printing, die-casting, building materials and hardware.



WRA-101

Technical parameters

Model	Type of feed	Fluid nozzle orifice ϕ mm	Applied air cap model	Spraying air pressure MPa (kgf/cm ²)	Air consumption l/min	Fluid output ml/min	Pattern width mm	Weight g	Application
WRA-101-082P	Pressure	0.8	E2P	0.29 (3.0)	270	150	190	285	Small workpieces
WRA-101-102P		1.0			270	200	220		
WRA-101-132P		1.3	H2	0.24 (2.5)	260	250	230		
WRA-101-152P		1.5			260	270	245		
WRA-101-182P		1.8	N2	190	310	240			
WRA-200-122P		1.2	G2P	0.29 (3.0)	530	500	400	320	Large workpieces
WRA-200-152P		1.5	K2		330	270	340		
WRA-200-182P		1.8			330	330	340		
WRA-200-202P	2.0	R2	360		400	320			

WRA-200 automatic spray gun used with robots

Functions and features:

- A long and narrow spray pattern, uniform and optimum atomization, a large pattern width and finely atomized paint particles;
- High-efficiency and fast application;
- Easy operation and a lightweight gun body;
- Easy to clean the fluid nozzle because of the fluid circulation hole set in the spray gun;
- As required, inlet pressure is adjustable from 2.5bar to 3.0bar to reduce bounceback and save paints;
- Used with mechanical arms or automatic painting equipment for mass production. The parameters of inlet pressure and pattern width can be set outside, so that it can be remotely adjusted and controlled independently to reduce operational problems;
- Widely used in all kinds of industries, such as computer housing, mobile phone housing, cosmetics, furniture, hand tools, medicine, food, textile, glass, plastics, rubber, printing, die-casting, building materials and hardware.



WRA-200

Technical parameters

Model	Type of feed	Fluid nozzle orifice ϕ mm	Applied air cap model	Spraying air pressure MPa (kgf/cm ²)	Air consumption l/min	Fluid output ml/min	Pattern width mm	Weight g	Application
WRA-101-082P	Pressure	0.8	E2P	0.29 (3.0)	270	150	190	285	Small workpieces
WRA-101-102P		1.0			270	200	220		
WRA-101-132P		1.3	H2	0.24 (2.5)	260	250	230		
WRA-101-152P		1.5			260	270	245		
WRA-101-182P		1.8	N2	190	310	240			
WRA-200-122P		1.2	G2P	0.29 (3.0)	530	500	400	320	Large workpieces
WRA-200-152P		1.5	K2		330	270	340		
WRA-200-182P		1.8			330	330	340		
WRA-200-202P	2.0	R2	360		400	320			

WRA-111 multihole air cap automatic spray gun

- Application: suitable for small workpieces with a reduction of covering and pollution of jigs.
- Features: the multihole air cap can control atomized air independently to make the edge of spray pattern clean. WRA-111 has a fluid re-circulation hole by which fluids return to the paint tank.



WRA-111

Technical parameters

Model	Name	Type of feed	Fluid nozzle orifice Φ mm	Spraying air pressure MPa (kgf/cm ²)	Air consumption l/min	Pattern width mm	CAP thread	FAN thread	CYL thread	Fluid thread	Fixed screw mm	Weight g
WRA-111-05P	Multihole air cap automatic spray gun	Pressure	0.5	0.26 (2.6) (recommended)	350	Round	Rc1/8	Rc1/8	Rc1/8	Rc1/8	M8x1.25mm Used for bolt hole	350
WRA-111-08P			0.8									

LRA-101 automatic spray gun used with robots

Functions and features:

- Uniform and optimum atomization, a large pattern width and finely atomized paint particles;
- High-efficiency painting and easy operation;
- Inlet pressure is adjustable from 2.0bar to 2.7bar as required and the air pressure in the air cap is less than 0.7bar, resulting in less bounceback and high transfer efficiency, so that paint consumption is reduced by from 20% to 30%;
- Suitable for metal powders, which can be applied uniformly by the spray gun and won't be deposited;
- Used with mechanical arms or automatic painting equipment for mass production. The parameters of inlet pressure, pattern width and fluid output can be set outside, so that it can be remotely adjusted and controlled independently to reduce operational problems;
- Widely used in all kinds of industries, such as computer housing, mobile phone housing, cosmetics, furniture, hand tools, medicine, food, textile, glass, plastics, rubber, printing, die-casting, building materials and hardware.



LRA-101

Technical parameters

Model	Type of feed	Fluid nozzle orifice ϕ mm	Applied air cap model	Spraying air pressure MPa (kgf/cm ²)	Air consumption l/min	Fluid output ml/min	Pattern width mm	Weight g	Application
LRA-101-081P		0.8	E1	0.29 (3.0)	430	140	200	360	Small workpieces
LRA-101-101P		1.0				150	200		
LRA-200-082P	Pressure	0.8	G2	0.24 (2.5)	500	400	300	378	Large workpieces
LRA-200-102P		1.0				400	300		
LRA-200-122P		1.2				500	300		

LRA-200 automatic spray gun used with robots

Functions and features:

- Uniform and optimum atomization, a large pattern width and finely atomized paint particles;
- High-efficiency painting and easy operation;
- Inlet pressure is adjustable from 2.0bar to 2.7bar as required and the air pressure in the air cap is less than 0.7bar, resulting in less bounceback and high transfer efficiency, so that paint consumption is reduced by from 20% to 30%;
- Suitable for metal powders, which can be applied uniformly by the spray gun and won't be deposited;
- Used with mechanical arms or automatic painting equipment for mass production. The parameters of inlet pressure, pattern width and fluid output can be set outside, so that it can be remotely adjusted and controlled independently to reduce operational problems;
- Widely used in all kinds of industries, such as computer housing, mobile phone housing, cosmetics, furniture, hand tools, medicine, food, textile, glass, plastics, rubber, printing, die-casting, building materials and hardware.



LRA-200

Technical parameters

Model	Type of feed	Fluid nozzle orifice ϕ mm	Applied air cap model	Spraying air pressure MPa (kgf/cm ²)	Air consumption l/min	Fluid output ml/min	Pattern width mm	Weight g	Application
LRA-101-081P		0.8	E1	0.29 (3.0)	430	140	200	360	Small workpieces
LRA-101-101P		1.0				150	200		
LRA-200-082P	Pressure	0.8	G2	0.24 (2.5)	500	400	300	378	Large workpieces
LRA-200-102P		1.0				400	300		
LRA-200-122P		1.2				500	300		

LRA-200 short air cap automatic spray gun used with robots

Functions and features:

- Uniform and optimum atomization, a large pattern width and finely atomized paint particles;
- High-efficiency painting and easy operation;
- Inlet pressure is adjustable from 2.0bar to 2.7bar as required and the air pressure in the air cap is less than 0.7bar, resulting in less bounceback and high transfer efficiency, so that paint consumption is reduced by from 20% to 30%;
- Suitable for metal powders, which can be applied uniformly by the spray gun and won't be deposited;
- Used with mechanical arms or automatic painting equipment for mass production. The parameters of inlet pressure, pattern width and fluid output can be set outside, so that it can be remotely adjusted and controlled independently to reduce operational problems;
- Widely used in all kinds of industries, such as computer housing, mobile phone housing, cosmetics, furniture, hand tools, medicine, food, textile, glass, plastics, rubber, printing, die-casting, building materials and hardware.



LRA-200短帽

Technical parameters

Model	Type of feed	Fluid nozzle orifice Φ mm	Spraying air pressure MPa (kgf/cm ²)	Air consumption l/min	Fluid output ml/min	Pattern width mm	Weight g
LRA-200-08P	Pressure	0.8	0.29 (3.0)	380	300	110	370
LRA-200-10P		1.0		380	350	130	
LRA-200-12P		1.2		530	500	220	
LRA-200-15P		1.5		330	270	250	
LRA-200-special		0.8	0.09 (1.0)	200	30 - 150	30 - 160	
		1.0	0.8	200	30 - 150	30 - 150	

WRA-3000 lightweight low-pressure environmental-protection spray gun

Features:

- LVMP type, high efficiency and low air consumption;
- The quick-release structure makes it easy to be taken apart and installed without tools and relocating;
- Fluids can be reused by a fluid re-circulation hole in the gun body, which prevents fluids from being deposited;
- The internal structure of the spray gun is smooth, so that it is convenient to clean and change colors.



WRA-3000

Technical parameters

Model	Fluid nozzle orifice Φ mm	Air consumption l/min	Pattern width mm	Spraying air pressure (max) MPa (kgf/cm ²)	Atomizing air pressure MPa (kgf/cm ²)	Air cylinder working pressure MPa (kgf/cm ²)	Fluid hose size mm	Weight g
WRA-3000	0.7	280	220	0.69 (7.0)	0.1 - 0.39 (1.0 - 4.0)	0.34 - 0.49 (3.5 - 5.0)	6x4	370
	1.1							
	1.4							

MAL-470 low pressure environmental-protection spray gun for ultra large pattern width

Functions and features:

- Special designs of the inner structure create the special automatic spray gun MAL-470 which is the ideal tool of cost saving;
- Optimum atomization effect, an ultra large pattern width, high transfer efficiency and paint saving;
- MAL-470 is widely used in leather, plastics and so on.



MAL-470

Technical parameters

Model	Type of feed	Fluid nozzle orifice Φ mm	Spray distance mm	Spraying air pressure MPa (kgf/cm ²)	Air consumption l/min	Fluid output ml/min	Pattern width mm	Weight g
MAL-470-11P	Pressure	1.1	200	0.3 (3.0)	400	270	420	500
MAL-470-14P		1.4				320	480	

MAL-520 low pressure low air volume high-efficiency spray gun

Functions and features:

- The ultra hard fluid nozzle is made with precision machining;
- Atomized paint particles are very fine up to films of the smooth surface of the mirror. The paint particles are applied uniformly and easily with steady shapes;
- With well-dispersed paint mists and a reduction of overspray, MAL-520 saves paints to avoid a waste of paints;
- Suitable for electromagnetic wave sealant for mobile phones and computers, and functional paints for pistons, valves and pulley boosters of parts of automobiles; suitable for ultra thin films for fluorescent tubes (photocatalysis agents) and cosmetic bottles; suitable for expensive paints, such as “fluorine paints”, “UV paints”, “silicon paints” and “molybdenum paints”.



Technical parameters

Model	Type of feed	Fluid nozzle orifice Φ mm	Spray distance mm	Spraying air pressure MPa (kgf/cm ²)	Air consumption l/min	Fluid output ml/min	Pattern width mm	Weight g
MAL-520-082P	Pressure	0.8	200	0.2 (2.0)	300	160	180	450
MAL-520-102P		1.0				200		

SGD-77 pressure type water in water multicolor spray gun

Functions and features:

- The spray gun has a steady performance and won't damage the structure of water in water multicolor paints;
- Used in paint factories and painting factories, and suitable for internal or external walls;
- Suitable for emulsion paints, metallic paints, fluorine carbon paints, multicolor paints, stone paints, art paints, granite paints and imitative stone paints.



SGD-77

Technical parameters

Model	Type of feed	Fluid nozzle orifice Φmm	Spray distance mm	Spraying air pressure MPa (kgf/cm ²)	Air consumption l/min	Fluid output ml/min	Weight g
SGD-WA200	Pressure	2.5	200	0.3 (3.0)	450	480	500
		3.0			650	520	
1.2		560			380		
1.5					400		
2.0					440		
2.5					480		
3.0					520		

SGD-WA200 water in water multicolor spray gun

Functions and features:

- The spray gun has a steady performance and won't damage the structure of water in water multicolor paints;
- Used in paint factories and painting factories, and suitable for internal or external walls;
- Suitable for emulsion paints, metallic paints, fluorine carbon paints, multicolor paints, stone paints, art paints, granite paints and imitative stone paints.



SGD-WA200

Technical parameters

Model	Type of feed	Fluid nozzle orifice Φmm	Spray distance mm	Spraying air pressure MPa (kgf/cm ²)	Air consumption l/min	Fluid output ml/min	Weight g
SGD-WA200	Pressure	2.5	200	0.3 (3.0)	450	480	500
		3.0			650	520	
1.2		560			380		
1.5		400					
2.0		440					
2.5		480					
3.0	520						

SGD-W101 disheveled spray gun

Functions and features:

- With special air caps, the spray gun can apply disheveled patterns, spattering patterns, dyeing cloth patterns and pear peel patterns;
- Suitable for arts and crafts, industry, woodwork and cloth patterns.



Technical parameters

Model	Type of feed	Fluid nozzle orifice Φ mm	Spray distance mm	Spraying air pressure MPa (kgf/cm ²)	Air consumption l/min	Fluid output ml/min	Weight g
SGD-W101-08P	Pressure	0.8	200	0.2 (2.0)	80	150	295
SGD-W101-13P		1.3	200	0.2 (2.0)	80	230	

SGD-WA101 disheveled spray gun

Functions and features:

- SGD-WA101 can be used in decorations of surfaces of products, spraying disheveled patterns, big points and small points;
- For small point patterns, please use No. 1 air cap;
- For big point patterns, please use No. 2 air cap. Paint viscosity is 25 seconds below and air pressure is 0.15 (1.5) MPa (bar) above;
- For disheveled patterns, please use No. 3 air cap. Paint viscosity is 35 seconds above and air pressure is 0.15 (1.5) MPa (bar) below.



Technical parameters

Model	Type of feed	Fluid nozzle orifice Φ mm	Spraying air pressure MPa (kgf/cm ²)	Air consumption l/min	Fluid output ml/min	Weight g
SGD-71	Suction	0.7	0.1-0.25 (1.0-2.5)	80	80	1012
		2.0		140	240	
SGD-WA101	Pressure	0.8		80	80	522

WA-101L internal painting automatic extension nozzle spray gun

Functions and features:

- The extension nozzle spray gun is suitable for internal surfaces of pipes and for painting operation in hard-to-reach places;
- The extension nozzle is made using special designs to achieve high transfer efficiency and fast speed of spraying;
- The connecting pipe and paint pipe of the spray gun are made of stainless steel, which are unbending, not deformative, anti-wear and anti-corrosive;
- The fluid nozzle and fluid needle are made of first-class stainless steel for waterborne paints;
- The extension spray gun has many different kinds of optional and special lengths of extension nozzles.



WA-101L

Technical parameters

Model	Pipe length (A) mm	Fluid nozzle orifice Φ mm	Pipe diameter Φ mm	Spraying air pressure MPa (kgf/cm ²)	Pattern curve degree °
W-1218 / WA-1218	180	0.6	12	0.29 (3.0)	about 19
W-1225 / WA-1225	250				
W-1235 / WA-1235	350				
W-0915 / WA-0915	150	0.5	9	0.29 (3.0)	about 14
W-0925 / WA-0925	250				
W-0935 / WA-0935	350				
W-0609 / WA-0609	90	0.5	6	0.29 (3.0)	about 4
W-0615 / WA-0615	150				
W-0625 / WA-0625	250				
W-0635 / WA-0635	350				

W-101L internal painting extension nozzle spray gun

Functions and features:

- The extension nozzle spray gun is suitable for internal surfaces of pipes and for painting operation in hard-to-reach places;
- The extension nozzle is made using special designs to achieve high transfer efficiency and fast speed of spraying;
- The connecting pipe and paint pipe of the spray gun are made of stainless steel, which are unbending, not deformative, anti-wear and anti-corrosive;
- The fluid nozzle and fluid needle are made of first-class stainless steel for waterborne paints;
- The extension spray gun has many different kinds of optional and special lengths of extension nozzles.



W-101L

Technical parameters

Model	Pipe length (A) mm	Fluid nozzle orifice Φ mm	Pipe diameter Φ mm	Spraying air pressure MPa (kgf/cm ²)	Pattern curve degree °
W-1218 / WA-1218	180	0.6	12	0.29 (3.0)	about 19
W-1225 / WA-1225	250				
W-1235 / WA-1235	350				
W-0915 / WA-0915	150	0.5	9	0.29 (3.0)	about 14
W-0925 / WA-0925	250				
W-0935 / WA-0935	350				
W-0609 / WA-0609	90	0.5	6	0.29 (3.0)	about 4
W-0615 / WA-0615	150				
W-0625 / WA-0625	250				
W-0635 / WA-0635	350				

LWA360-P10 internal painting automatic extension nozzle spray gun

Functions and features:

- The extension nozzle spray gun is suitable for painting operation in hard-to-reach places;
- The extension nozzle is made using special designs to achieve high transfer efficiency and fast speed of spraying;
- The connecting pipe and paint pipe of the spray gun are made of stainless steel, which are unbending, not deformative, anti-wear and anti-corrosive;
- The air cap, the fluid nozzle and the fluid needle are made of first-class stainless steel for waterborne paints;
- The extension spray gun has many different kinds of optional and special lengths of extension nozzles.



LWA360-P10



LW360-P10 internal painting extension nozzle spray gun

Functions and features:

- The extension nozzle spray gun is suitable for painting operation in hard-to-reach places;
- The extension nozzle is made using special designs to achieve high transfer efficiency and fast speed of spraying;
- The connecting pipe and paint pipe of the spray gun are made of stainless steel, which are unbending, not deformative, anti-wear and anti-corrosive;
- The air cap, the fluid nozzle and the fluid needle are made of first-class stainless steel for waterborne paints;
- The extension spray gun has many different kinds of optional and special lengths of extension nozzles.



LW360-P10



LWA10-P10 internal painting automatic extension nozzle spray gun

Functions and features:

- The extension nozzle spray gun is suitable for painting operation in hard-to-reach places;
- The extension nozzle is made using special designs to achieve high transfer efficiency and fast speed of spraying;
- The connecting pipe and paint pipe of the spray gun are made of stainless steel, which are unbending, not deformative, anti-wear and anti-corrosive;
- The air cap, the fluid nozzle and the fluid needle are made of first-class stainless steel for waterborne paints;
- The extension spray gun has many different kinds of optional and special lengths of extension nozzles.



LWA10-P10

Technical parameters

Model	Fluid nozzle orifice Φ mm	Applied air cap model	Spraying air pressure MPa (kgf/cm ²)	Air consumption l/min	Fluid output ml/min	Pipe length mm	Spray distance mm	Pattern width mm	Weight g		
LW10-P08	0.8	E2P	0.29 (3.0)	270	150	50	200	190	505 - 852		
LW10-P10	1.0				200			220			
LW10-P13	1.3		0.24 (2.5)	220	200	150		210			
LW10-P15	1.5				250	200		240			
LWA10-P08	0.8		0.29 (3.0)	270	150	300		190	749 - 1016		
LWA10-P10	1.0				200	500		220			
LWA10-P13	1.3				0.24 (2.5)	220		200		800	210
LWA10-P15	1.5							250		240	

LW10-P10 internal painting extension nozzle spray gun

Functions and features:

- The extension nozzle spray gun is suitable for painting operation in hard-to-reach places;
- The extension nozzle is made using special designs to achieve high transfer efficiency and fast speed of spraying;
- The connecting pipe and paint pipe of the spray gun are made of stainless steel, which are unbending, not deformative, anti-wear and anti-corrosive;
- The air cap, the fluid nozzle and the fluid needle are made of first-class stainless steel for waterborne paints;
- The extension spray gun has many different kinds of optional and special lengths of extension nozzles.



Technical parameters

Model	Fluid nozzle orifice Φ mm	Applied air cap model	Spraying air pressure MPa (kgf/cm ²)	Air consumption l/min	Fluid output ml/min	Pipe length mm	Spray distance mm	Pattern width mm	Weight g			
LW10-P08	0.8	E2P	0.29 (3.0)	270	150	50	200	190	505 - 852			
LW10-P10	1.0				200			220				
LW10-P13	1.3		0.24 (2.5)	220	200			150		210		
LW10-P15	1.5				250			200		240		
LWA10-P08	0.8		E2P	0.29 (3.0)	270			150		300	190	749 - 1016
LWA10-P10	1.0							200		500	220	
LWA10-P13	1.3			0.24 (2.5)	220			200		800	210	
LWA10-P15	1.5							250		240		

LWA18-P10 internal painting automatic extension nozzle spray gun

Functions and features:

- It is more convenient for the head of the spray gun to rotate by 180 degrees;
- The extension spray gun has many different kinds of optional and special lengths of extension nozzles;
- The surface of the extension nozzle is sandblasted, which is smooth, clean and skidproof;
- Quickly change its fluid nozzle to make it easily cleaned;
- High-speed painting and uniform solidification



LWA18-P10

Technical parameters

Model	Head angle °	Fluid nozzle orifice Φmm	Applied air cap model	Spraying air pressure MPa (kgf/cm ²)	Air consumption l/min	Fluid output ml/min	Pipe length mm	Spray distance mm	Pattern width mm	Weight g
LW18-P08	0 - 180 (adjustable)	0.8	E2P	0.29 (3.0)	270	150	50	200	190	583 - 1769
LW18-P10		1.0				200			220	
LW18-P13		1.3		0.24 (2.5)	220	200	150		210	
LW18-P15		1.5				250	300		240	
LWA18-P08		0.8		0.29 (3.0)	270	150	500		190	747 - 1933
LWA18-P10		1.0				200	800		220	
LWA18-P13		1.3		0.24 (2.5)	220	200	1000		210	
LWA18-P15		1.5				250	1500		240	

LW18-P10 internal painting extension nozzle spray gun

Functions and features:

- It is more convenient for the head of the spray gun to rotate by 180 degrees;
- The extension spray gun has many different kinds of optional and special lengths of extension nozzles;
- The surface of the extension nozzle is sandblasted, which is smooth, clean and skidproof;
- Quickly change its fluid nozzle to make it easily cleaned;
- High-speed painting and uniform solidification



LW18-P10

Technical parameters

Model	Head angle °	Fluid nozzle orifice Φmm	Applied air cap model	Spraying air pressure MPa (kgf/cm ²)	Air consumption l/min	Fluid output ml/min	Pipe length mm	Spray distance mm	Pattern width mm	Weight g
LW18-P08	0 - 180 (adjustable)	0.8	E2P	0.29 (3.0)	270	150	50	200	190	583 - 1769
LW18-P10		1.0				200			220	
LW18-P13		1.3		0.24 (2.5)	220	200	150	210		
LW18-P15		1.5				250	300	240		
LWA18-P08		0.8		0.29 (3.0)	270	150	500	190	747 - 1933	
LWA18-P10		1.0				200	800	220		
LWA18-P13		1.3		0.24 (2.5)	220	200	1000	210		
LWA18-P15		1.5				250	1500	240		

MA-100 simple type automatic spray gun

Functions and features:

- Uniform atomization, finely atomized paint particles and a large pattern width;
- Lightweight and easy to operate;
- The fluid nozzle and fluid needle are made of stainless steel, which are suitable for waterborne paints;
- Widely used in all kinds of industries, such as hand tools, medicine, food, textile, glass, plastics, rubber, printing, die-casting, vacuum blister, building materials, hardware, steel plate cooling and steel plate lubrication.



MA-100

Technical parameters

Model	Type of feed	Fluid nozzle orifice Φ mm	Applied air cap model	Spraying air pressure MPa (kgf/cm ²)	Air consumption l/min	Fluid output ml/min	Pattern width mm	Weight g	
MA-100-082P	Pressure	0.8	E2P	0.3 (3.0)	270	150	190	248	
MA-100-102P		1.0			270	200	220		
MA-100-132P		1.3	H2	0.25 (2.5)	260	250	230		
MA-100-152P		1.5			260	270	245		
MA-100-182P		1.8	N2	190	310	240			
MA-200-122P		1.2	G2P	0.3 (3.0)	530	500	400		272
MA-200-152P		1.5	K2		330	270	340		
MA-200-182P		1.8			330	330	340		
MA-200-202P		2.0	R2		360	400	320		
MA-200-251P		2.5	W1		360	500	330		

MA-200 simple type automatic spray gun

Functions and features:

- Uniform atomization, finely atomized paint particles and a large pattern width;
- Lightweight and easy to operate;
- The fluid nozzle and fluid needle are made of stainless steel, which are suitable for waterborne paints;
- Widely used in all kinds of industries, such as hand tools, medicine, food, textile, glass, plastics, rubber, printing, die-casting, vacuum blister, building materials, hardware, steel plate cooling and steel plate lubrication.



MA-200

Technical parameters

Model	Type of feed	Fluid nozzle orifice Φ mm	Applied air cap model	Spraying air pressure MPa (kgf/cm ²)	Air consumption l/min	Fluid output ml/min	Pattern width mm	Weight g
MA-100-082P	Pressure	0.8	E2P	0.3 (3.0)	270	150	190	248
MA-100-102P		1.0			270	200	220	
MA-100-132P		1.3	H2	0.25 (2.5)	260	250	230	
MA-100-152P		1.5			260	270	245	
MA-100-182P		1.8	N2	190	310	240		
MA-200-122P		1.2	G2P	0.3 (3.0)	530	500	400	
MA-200-152P		1.5	K2		330	270	340	
MA-200-182P		1.8			330	330	340	
MA-200-202P		2.0	R2		360	400	320	
MA-200-251P		2.5	W1		360	500	330	

MAL-100 simple type automatic spray gun

Functions and features:

- The air pressure in the air cap is less than 0.7bar, resulting in high transfer efficiency, so that paint consumption is reduced by approximately 10%;
- A lightweight gun body and a large pattern width;
- The fluid nozzle and fluid needle are made of stainless steel, which are suitable for waterborne paints;
- Suitable for metal powders, which can be applied uniformly by the spray gun and won't be deposited;
- Widely used in all kinds of industries, such as computer case, mobile phone case, cosmetic case, furniture, hand tools, medicine, food, textile, glass, plastics, rubber, printing, die-casting, building materials, hardware etc.



Technical parameters

Model	Type of feed	Fluid nozzle orifice Φ mm	Applied air cap model	Spraying air pressure MPa (kgf/cm ²)	Air consumption l/min	Fluid output ml/min	Pattern width mm	Weight g
MAL-100	Pressure	1.0	A1	0.3 (3.0)	430	150	200	248
		1.3		0.35 (3.5)	530	350	270	
MAL-200	Pressure	1.0	A2	0.25 (2.5)	500	400	300	272
		1.2		0.2 (2.0)	500	500	300	

MAL-200 simple type automatic spray gun

Functions and features:

- The air pressure in the air cap is less than 0.7bar, resulting in high transfer efficiency, so that paint consumption is reduced by approximately 10%;
- A lightweight gun body and a large pattern width;
- The fluid nozzle and fluid needle are made of stainless steel, which are suitable for waterborne paints;
- Suitable for metal powders, which can be applied uniformly by the spray gun and won't be deposited;
- Widely used in all kinds of industries, such as computer case, mobile phone case, cosmetic case, furniture, hand tools, medicine, food, textile, glass, plastics, rubber, printing, die-casting, building materials, hardware etc.



Technical parameters

Model	Type of feed	Fluid nozzle orifice Φ mm	Applied air cap model	Spraying air pressure MPa (kgf/cm ²)	Air consumption l/min	Fluid output ml/min	Pattern width mm	Weight g
MAL-100	Pressure	1.0	A1	0.3 (3.0)	430	150	200	248
		1.3		0.35 (3.5)	530	350	270	
MAL-200	Pressure	1.0	A2	0.25 (2.5)	500	400	300	272
		1.2		0.2 (2.0)	500	500	300	

ST-5 simple type automatic spray gun

Functions and features:

- Small, lightweight, compact, simple and easy to operate;
- The fluid nozzle and fluid needle are made of stainless steel, which are suitable for waterborne paints;
- It is more convenient for you to have several optional orifices of fluid nozzles;
- Widely used in medicine, food, textile, printing, plastics, rubber, steel plate cooling, steel plate lubrication and vacuum blister.



ST-5

Technical parameters

Model	Type of feed	Type of spray pattern	Fluid nozzle orifice Φmm	Spraying air pressure MPa (kgf/cm ²)	Air consumption l/min	Water flow ml/min	Pattern width mm	Weight g	
ST-5	Pressure	Fan pattern	0.5	0.3 (3.0)	60	60	200	280	
			1.0						
		and round pattern	1.3		80	250	250		
			2.0						
ST-6		Fan pattern	0.5		0.3 (3.0)	100	360	350	300
			1.0						
		and round pattern	1.3			140	600	400	
			2.0						

ST-6 simple type automatic spray gun

Functions and features:

- Small, lightweight, compact, simple and easy to operate;
- The fluid nozzle and fluid needle are made of stainless steel, which are suitable for waterborne paints;
- It is more convenient for you to have several optional orifices of fluid nozzles;
- Widely used in medicine, food, textile, printing, plastics, rubber, steel plate cooling, steel plate lubrication and vacuum blister.



ST-6

Technical parameters

Model	Type of feed	Type of spray pattern	Fluid nozzle orifice Φmm	Spraying air pressure MPa (kgf/cm ²)	Air consumption l/min	Water flow ml/min	Pattern width mm	Weight g
ST-5	Pressure	Fan pattern and round pattern	0.5	0.3 (3.0)	60	60	200	280
			1.0					
			1.3					
			2.0					
ST-6		Fan pattern and round pattern	0.5		100	360	350	300
			1.0					
			1.3					
			2.0					
					140	600	400	

ST-5R simple type automatic spray gun

Functions and features:

- Small, lightweight, compact, simple and easy to operate;
- The fluid nozzle and fluid needle are made of stainless steel, which are suitable for waterborne paints;
- It is more convenient for you to have several optional orifices of fluid nozzles;
- Widely used in medicine, food, textile, printing, plastics, rubber, steel plate cooling, steel plate lubrication and vacuum blister.



ST-5R

Technical parameters

Model	Type of feed	Type of spray pattern	Fluid nozzle orifice Φmm	Spraying air pressure MPa (kgf/cm ²)	Air consumption l/min	Water flow ml/min	Pattern width mm	Weight g
ST-5R	Pressure	Round pattern	0.5	0.3 (3.0)	40	70	50	280
			1.0					
			1.3		50	290	70	
			2.0					
ST-6R		Round pattern	0.5		55	430	80	300
			1.0					
			1.3		80	650	90	
			2.0					

ST-6R simple type automatic spray gun

Functions and features:

- Small, lightweight, compact, simple and easy to operate;
- The fluid nozzle and fluid needle are made of stainless steel, which are suitable for waterborne paints;
- It is more convenient for you to have several optional orifices of fluid nozzles;
- Widely used in medicine, food, textile, printing, plastics, rubber, steel plate cooling, steel plate lubrication and vacuum blister.



ST-6R

Technical parameters

Model	Type of feed	Type of spray pattern	Fluid nozzle orifice Φ mm	Spraying air pressure MPa (kgf/cm ²)	Air consumption l/min	Water flow ml/min	Pattern width mm	Weight g
ST-5R	Pressure	Round pattern	0.5	0.3 (3.0)	40	70	50	280
			1.0					
			1.3		50	290	70	
			2.0					
ST-6R		Round pattern	0.5		55	430	80	300
			1.0					
			1.3		80	650	90	
			2.0					

ST-5S simple type automatic spray gun

Functions and features:

- Small, lightweight, compact, simple and easy to operate;
- The fluid nozzle and fluid needle are made of stainless steel, which are suitable for waterborne paints;
- It is more convenient for you to have several optional orifices of fluid nozzles;
- Widely used in medicine, food, textile, printing, plastics, rubber, steel plate cooling, steel plate lubrication and vacuum blister.



ST-5S

Technical parameters

Model	Type of feed	Type of spray pattern	Fluid nozzle orifice Φ mm	Spraying air pressure MPa (kgf/cm ²)	Air consumption l/min	Water flow ml/min	Pattern width mm	Weight g
ST-5S	Pressure	Small round pattern or thin line pattern	0.5	0.3 (3.0)	60	40	18	280
ST-6S								300

ST-6S simple type automatic spray gun

Functions and features:

- Small, lightweight, compact, simple and easy to operate;
- The fluid nozzle and fluid needle are made of stainless steel, which are suitable for waterborne paints;
- It is more convenient for you to have several optional orifices of fluid nozzles;
- Widely used in medicine, food, textile, printing, plastics, rubber, steel plate cooling, steel plate lubrication and vacuum blister.



ST-6S

Technical parameters

Model	Type of feed	Type of spray pattern	Fluid nozzle orifice Φ mm	Spraying air pressure MPa (kgf/cm ²)	Air consumption l/min	Water flow ml/min	Pattern width mm	Weight g
ST-5S	Pressure	Small round pattern or thin line pattern	0.5	0.3 (3.0)	60	40	18	280
ST-6S		300						

ST-5L simple type automatic spray gun

Functions and features:

- Small, lightweight, compact, simple and easy to operate;
- The fluid nozzle and fluid needle are made of stainless steel, which are suitable for waterborne paints;
- It is more convenient for you to have several optional orifices of fluid nozzles;
- Widely used in medicine, food, textile, printing, plastics, rubber, steel plate cooling, steel plate lubrication and vacuum blister.



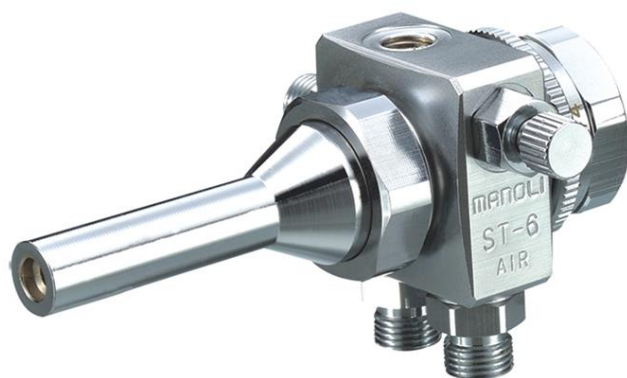
Technical parameters

Model	Type of feed	Type of spray pattern	Fluid nozzle orifice Φ mm	Spraying air pressure MPa (kgf/cm ²)	Air consumption l/min	Water flow ml/min	Pattern width mm	Weight g
ST-5L	Pressure	Round	1.3	0.3 (3.0)	170	50	100	280
ST-6L		Round	2.0		340	60	120	300

ST-6L simple type automatic spray gun

Functions and features:

- Small, lightweight, compact, simple and easy to operate;
- The fluid nozzle and fluid needle are made of stainless steel, which are suitable for waterborne paints;
- It is more convenient for you to have several optional orifices of fluid nozzles;
- Widely used in medicine, food, textile, printing, plastics, rubber, steel plate cooling, steel plate lubrication and vacuum blister.



ST-6L

Technical parameters

Model	Type of feed	Type of spray pattern	Fluid nozzle orifice Φ mm	Spraying air pressure MPa (kgf/cm ²)	Air consumption l/min	Water flow ml/min	Pattern width mm	Weight g
ST-5L	Pressure	Round pattern	1.3	0.3 (3.0)	170	50	100	280
ST-6L		Round pattern	2.0		340	60	120	300

HP-AP airbrush

Functions and features:

- Adjust the output of paints using the knob;
- The gasket of the fluid needle is made of Teflon, which is highly solvent-resistant;
- The knob and fluid needle are all-in-one, so that it is easy for airbrushes to take apart and clean;
- The cup can be taken apart and cleaned.



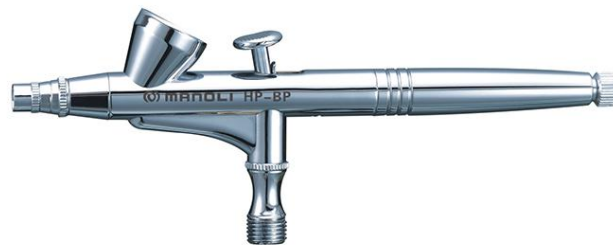
Technical parameters

Model	Standard container or cup ml	Fluid nozzle orifice Φ mm	Spraying air pressure MPa (kgf/cm ²)	Air consumption l/min	Fluid output ml/min	Weight g
HP-AP	0.2	0.2	0.1 - 0.29 (1.0 - 3.0)	11	12	95
HP-BP	3	0.2		11		87

HP-BP airbrush

Functions and features:

- Adjust the output of paints using the knob;
- The gasket of the fluid needle is made of Teflon, which is highly solvent-resistant;
- The knob and fluid needle are all-in-one, so that it is easy for airbrushes to take apart and clean;
- The cup can be taken apart and cleaned.



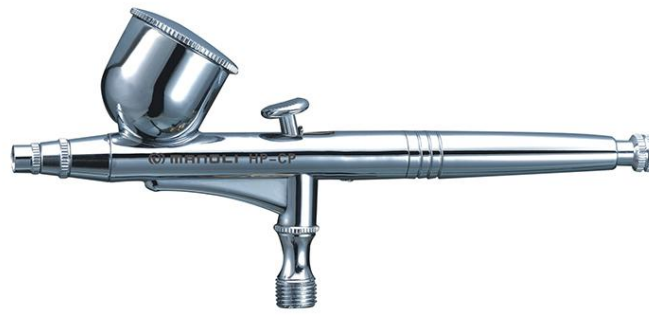
Technical parameters

Model	Standard container or cup ml	Fluid nozzle orifice Φ mm	Spraying air pressure MPa (kgf/cm ²)	Air consumption l/min	Fluid output ml/min	Weight g
HP-AP	0.2	0.2	0.1 - 0.29 (1.0 - 3.0)	11	12	95
HP-BP	3	0.2		11		87

HP-CP airbrush

Functions and features:

- Adjust the output of paints using the knob;
- The gasket of the fluid needle is made of Teflon, which is highly solvent-resistant;
- The knob and fluid needle are all-in-one, so that it is easy for airbrushes to take apart and clean.



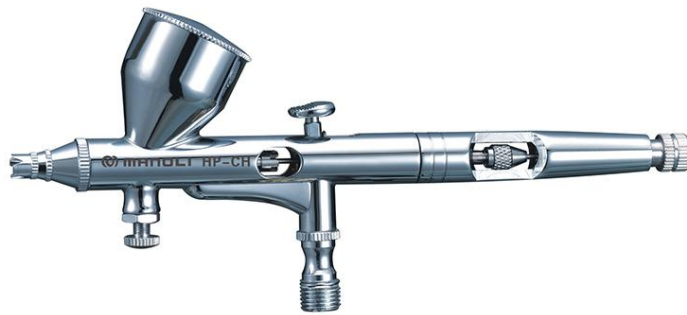
Technical parameters

Model	Standard container or cup ml	Fluid nozzle orifice Φ mm	Spraying air pressure MPa (kgf/cm ²)	Air consumption l/min	Fluid output ml/min	Weight g
HP-CP	7	0.3	0.1 - 0.29 (1.0 - 3.0)	14	12	90
HP-CH	7	0.3		11		109

HP-CH airbrush

Functions and features:

- Adjust the output of paints using the knob;
- The gasket of the fluid needle is made of Teflon, which is highly solvent-resistant;
- The knob and fluid needle are all-in-one, so that it is easy for airbrushes to take apart and clean.



Technical parameters

Model	Standard container or cup ml	Fluid nozzle orifice Φ mm	Spraying air pressure MPa (kgf/cm ²)	Air consumption l/min	Fluid output ml/min	Weight g
HP-CP	7	0.3	0.1 - 0.29 (1.0 - 3.0)	14	12	90
HP-CH	7	0.3		11		109

ML-100 airbrush

Functions and features:

- Adjust the output of paints using the knob;
- The gasket of the fluid needle is made of Teflon, which is highly solvent-resistant;
- The knob and fluid needle are all-in-one, so that it is easy for airbrushes to take apart and clean;
- The cup can be taken apart and cleaned.



Technical parameters

Model	Standard container or cup ml	Fluid nozzle orifice Φ mm	Spraying air pressure MPa (kgf/cm ²)	Air consumption l/min	Fluid output ml/min	Weight g
ML-100	3 - 7	0.2	0.1 - 0.29 (1.0 - 3.0)	11	12	95
GP-1	7 - 15	0.35		15		104

GP-1 airbrush

Functions and features:

- Adjust the output of paints using the knob;
- The gasket of the fluid needle is made of Teflon, which is highly solvent-resistant;
- The knob and fluid needle are all-in-one, so that it is easy for airbrushes to take apart and clean;
- The cup can be taken apart and cleaned.



GP-1



Technical parameters

Model	Standard container or cup ml	Fluid nozzle orifice Φ mm	Spraying air pressure MPa (kgf/cm ²)	Air consumption l/min	Fluid output ml/min	Weight g
ML-100	3 - 7	0.2	0.1 - 0.29 (1.0 - 3.0)	11	12	95
GP-1	7 - 15	0.35		15		104

A-119 airbrush

Functions and features:

- Apply high-viscosity paints for ultra small or large amount of painting operations;
- Paint capacity is 200ml;
- The gasket of the fluid needle is made of Teflon, which is highly solvent-resistant;
- The knob and fluid needle are all-in-one, so that it is easy for airbrushes to take apart and clean.



Technical parameters

Model	Standard container or cup ml	Fluid nozzle orifice Φ mm	Spraying air pressure MPa (kgf/cm ²)	Air consumption l/min	Fluid output ml/min	Weight g
A-119	30	0.3 - 0.5	0.1 - 0.29 (1.0 - 3.0)	14 - 16	12	104
A-200	30	0.5		20		96

A-200 airbrush

Functions and features:

- Apply high-viscosity paints for ultra small or large amount of painting operations;
- Paint capacity is 200ml;
- The gasket of the fluid needle is made of Teflon, which is highly solvent-resistant;
- The knob and fluid needle are all-in-one, so that it is easy for airbrushes to take apart and clean.



Technical parameters

Model	Standard container or cup ml	Fluid nozzle orifice Φ mm	Spraying air pressure MPa (kgf/cm ²)	Air consumption l/min	Fluid output ml/min	Weight g
A-119	30	0.3 - 0.5	0.1 - 0.29 (1.0 - 3.0)	14 - 16	12	104
A-200	30	0.5		20		96

Pneumatic double diaphragm pump

A-20 pneumatic double diaphragm pump



Technical parameters

Aluminum alloy pump series	A-20	A-31
Fluid inlet size	1/2" NPT	1" NPT
Air inlet size	1/4" NPT	3/8" NPT
Maximum working pressure	7bar	8bar
Minimum pneumatic pressure	Plane type air valve	1.6bar
	Low-pressure type air valve	0.5bar
Maximum fluid flow	12.76GPM (48LPM)	45.19GPM (180LPM)
Maximum pumping speed	400cpm	400cpm
Capacity for each circulation	0.15L	0.15L
Maximum air consumption	350L/min	960L/min
Maximum particle diameter	Φ 3mm	Φ 6mm
Suction lift	6.4m (wet);	5.48m (wet/dry)
	3.7m (dry)	
Net weight	4.5kg	9kg
Carton size (cm)	25x19.5x28	28.5x25x37.5

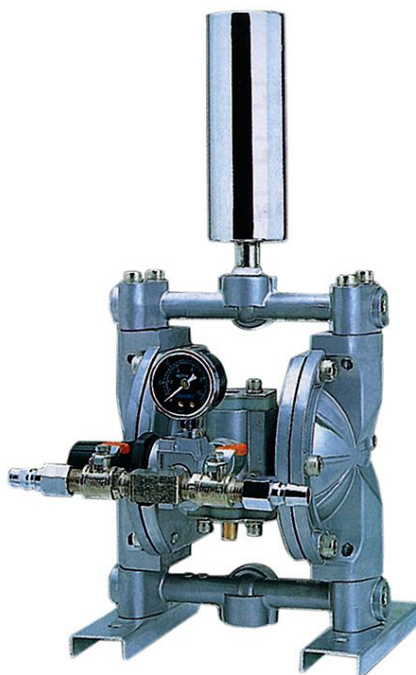
A-31 pneumatic double diaphragm pump



Technical parameters

Aluminum alloy pump series	A-20	A-31	
Fluid inlet size	1/2" NPT	1" NPT	
Air inlet size	1/4" NPT	3/8" NPT	
Maximum working pressure	7bar	8bar	
Minimum pneumatic pressure	Plane type air valve	1.6bar	1.6bar
	Low-pressure type air valve	0.5bar	0.7bar
Maximum fluid flow	12.76GPM (48LPM)	45.19GPM (180LPM)	
Maximum pumping speed	400cpm	400cpm	
Capacity for each circulation	0.15L	0.15L	
Maximum air consumption	350L/min	960L/min	
Maximum particle diameter	Φ 3mm	Φ 6mm	
Suction lift	6.4m (wet); 3.7m (dry)	5.48m (wet/dry)	
Net weight	4.5kg	9kg	
Carton size (cm)	25x19.5x28	28.5x25x37.5	

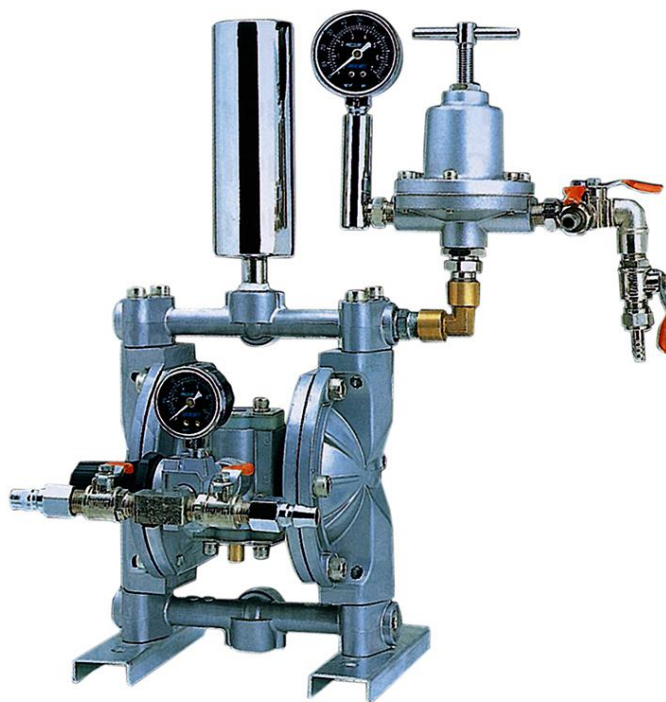
M-38E standard pneumatic double diaphragm pump



Technical parameters

Model	Type	Ratio	Fluid inlet size	Working pressure MPa (kgf/cm ²)	Spraying air pressure MPa (kgf/cm ²)	Maximum usable viscosity	Fluid regulator	Fluid filter	Maximum output l/min	Pump material	Diaphragm material	Weight kg
M-38E	Standard	1:1	3/8"	0.15 - 0.69 (1.5 - 7)	0.15 - 0.69 (1.5 - 7)	below 60	-	-	1.6	Aluminum alloy	Teflon	7
M-38R	With a fluid regulator					seconds	LFR-405	-	2.0			8.5
M-38FR	With the fluid regulator and filter					using NK-2 viscosity cup	LFR-405	LFR-405	2.0			9.2

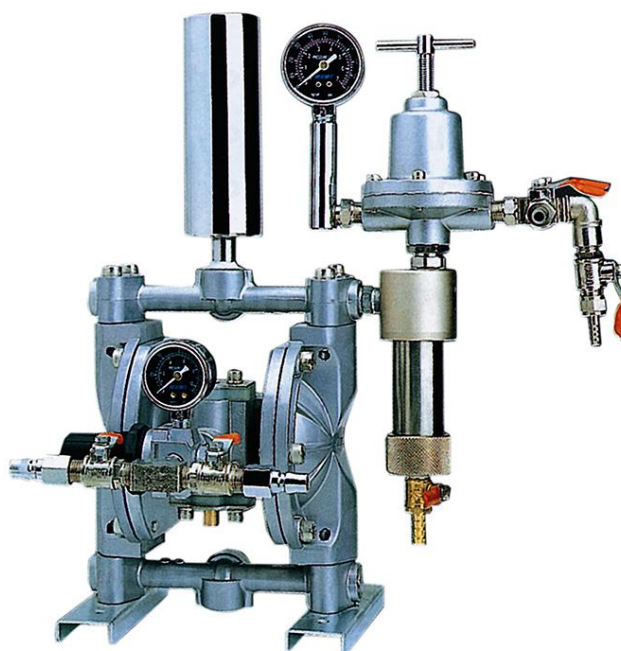
M-38R pneumatic double diaphragm pump with a fluid regulator



Technical parameters

Model	Type	Ratio	Fluid inlet size	Working pressure MPa (kgf/cm ²)	Spraying air pressure MPa (kgf/cm ²)	Maximum usable viscosity	Fluid regulator	Fluid filter	Maximum output l/min	Pump material	Diaphragm material	Weight kg
M-38E	Standard	1:1	3/8"	0.15 - 0.69 (1.5 - 7)	0.15 - 0.69 (1.5 - 7)	below 60	-	-	1.6	Aluminum alloy	Teflon	7
M-38R	With a fluid regulator					seconds	LFR-405	-	2.0			8.5
M-38FR	With the fluid regulator and filter					using NK-2 viscosity cup	LFR-405	LFR-405	2.0			9.2

M-38FR pneumatic double diaphragm pump with the fluid regulator and filter



Technical parameters

Model	Type	Ratio	Fluid inlet size	Working pressure MPa (kgf/cm ²)	Spraying air pressure MPa (kgf/cm ²)	Maximum usable viscosity	Fluid regulator	Fluid filter	Maximum output l/min	Pump material	Diaphragm material	Weight kg
M-38E	Standard	1:1	3/8"	0.15 - 0.69 (1.5 - 7)	0.15 - 0.69 (1.5 - 7)	below 60	-	-	1.6	Aluminum alloy	Teflon	7
M-38R	With a fluid regulator					seconds	LFR-405	-	2.0			8.5
M-38FR	With the fluid regulator and filter					using NK-2 viscosity cup	LFR-405	LFR-405	2.0			9.2

Agitator

1 gallon pneumatic agitator



5 gallon pneumatic agitator with a stand



5 gallon handled pneumatic agitator



50 gallon pneumatic agitator



Viscosity Cup

MANOLI NK-2 viscosity cup

1. Viscosity conversion

Use JIS8809-78 (standard liquid used for correcting viscosity by the viscometer) and JS-10/20/50/100/200.

2. The above is a sketchy viscosity conversion graph of measured values of the viscosity cup. The conversion values in the graph are not guarantee values, but reference values only.

3. NK-2 viscosity cup by which you can simply judge viscosity of liquids, is a measuring tool, but not a measuring instrument. Measured values are not for other uses.

4. $1P=100cPs=0.1Pas$

MANOLI NK-2 viscosity cup, a measuring tool, is used to simply and conveniently measure viscosity of paints on the spot, therefore, it can't be used in any other situation.



NK-2 viscosity cup

No. 4 viscosity cup

1. Viscosity conversion

Use JIS8809-78 (standard liquid used for correcting viscosity by the viscometer) and JS-10/20/50/100/200.

2. The above is a sketchy viscosity conversion graph of measured values of the viscosity cup. The conversion values in the graph are not guarantee values, but reference values only.

3. No. 4 viscosity cup by which you can simply judge viscosity of liquids, is a measuring tool, but not a measuring instrument. Measured values are not for other uses.

4. $1P=100cPs=0.1Pas$

No. 4 viscosity cup, a measuring tool, is used to simply and conveniently measure viscosity of paints on the spot, therefore, it can't be used in any other situation.

